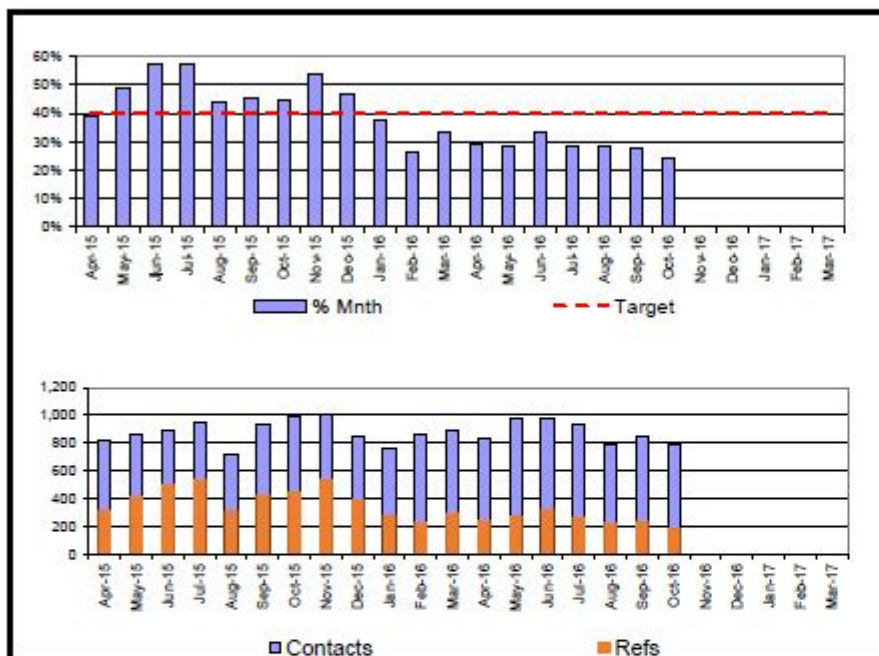


Chart 1

Number of contacts and % going on to referral October 2016



Month	Contacts	Refs	% Mnth	% YTD	Target	Var.	RAG
Apr-15	823	319	38.8%	38.8%	40.0%	-1.2%	A
May-15	880	418	48.8%	43.8%	40.0%	3.8%	A
Jun-15	884	506	57.1%	48.4%	40.0%	8.4%	A
Jul-15	943	538	57.1%	50.7%	40.0%	10.7%	A
Aug-15	714	314	44.0%	49.6%	40.0%	9.6%	A
Sep-15	936	426	45.5%	48.8%	40.0%	8.8%	A
Oct-15	998	448	44.9%	48.2%	40.0%	8.2%	A
Nov-15	1000	539	53.9%	49.0%	40.0%	9.0%	A
Dec-15	847	394	46.5%	48.7%	40.0%	8.7%	A
Jan-16	758	283	37.3%	47.7%	40.0%	7.7%	A
Feb-16	868	227	26.2%	45.8%	40.0%	5.8%	A
Mar-16	888	296	33.3%	44.7%	40.0%	4.7%	A
Apr-16	832	243	29.2%	29.2%	40.0%	-10.8%	A
May-16	971	276	28.4%	28.8%	40.0%	-11.2%	A
Jun-16	981	328	33.4%	30.4%	40.0%	-9.6%	G
Jul-16	940	265	28.2%	29.9%	40.0%	-10.1%	G
Aug-16	788	225	28.6%	29.6%	40.0%	-10.4%	G
Sep-16	847	235	27.7%	29.3%	40.0%	-10.7%	G
Oct-16	788	190	24.1%	28.7%	40.0%	-11.3%	G
Nov-16					40.0%		G
Dec-16					40.0%		G
Jan-17					40.0%		G
Feb-17					40.0%		G
Mar-17					40.0%		G

YTD:	6,147	1,762	-	28.7%	40.0%	-11.3%	G
------	-------	-------	---	-------	-------	--------	---

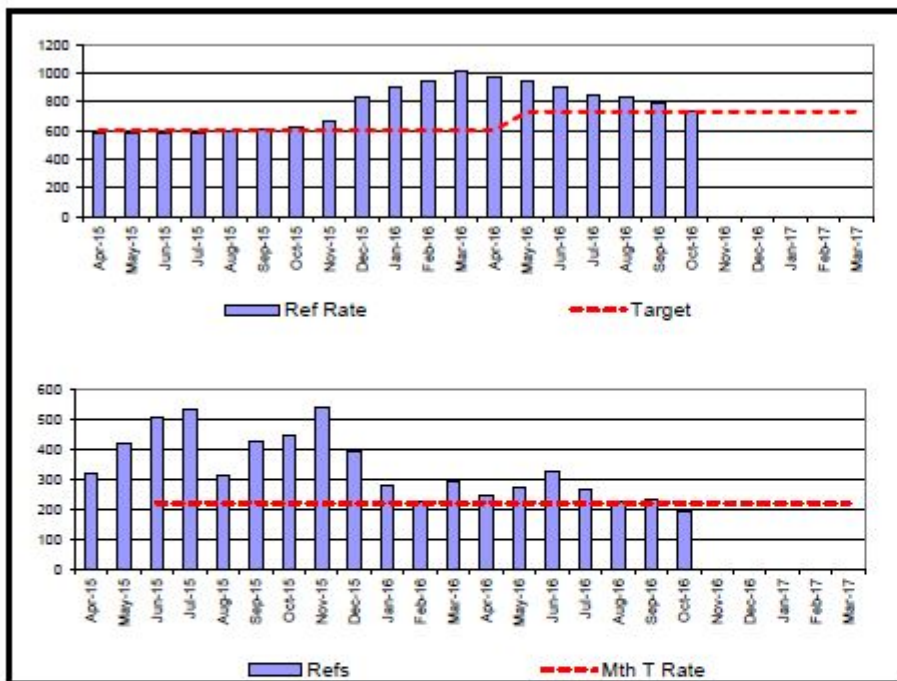
CSC Commentary
 Performance is within target this month generally there has been a continued decrease in the number of contacts going onto referrals. This will continue to be monitored closely. The target will be amended to stretc good performance from next month.

Definition
 The table shows the number of referrals and contacts happening in each given month. The %Mnth column shows in that month alone, the crude conversion of contacts that went onto referrals. The %YTD column shows the year to date percentage of contacts going on to referrals.

G =40 +/-10% A =+/- 10-20% R =+/- >20%

Chart 2

Number of Referrals per 10,000 - Rolling 12 Months October 2016



Month	Refs	12 Mths	Ref Rate	Mth T Rate	Target	Variance	RAG
Apr-15	319	2173	576.7	220	601.6	-4.1%	G
May-15	418	2197	582.4	220	601.6	-3.2%	G
Jun-15	505	2702	584.9	220	601.6	-2.8%	G
Jul-15	538	3240	584.9	220	601.6	-2.8%	G
Aug-15	314	3554	596.4	220	601.6	-0.9%	G
Sep-15	428	3980	608.2	220	601.6	1.1%	G
Oct-15	448	4227	630.0	220	601.6	4.7%	G
Nov-15	539	4529	664.9	220	601.6	10.5%	G
Dec-15	394	4685	836.9	220	601.6	39.1%	R
Jan-16	283	4755	897.6	220	601.6	49.2%	R
Feb-16	227	4713	946.4	220	601.6	57.3%	R
Mar-16	296	4707	1009.7	220	601.6	67.8%	R
Apr-16	243	4631	970.6	220	601.6	61.3%	R
May-16	276	4489	940.8	220	730.5	28.8%	R
Jun-16	328	4312	903.7	220	730.5	23.7%	R
Jul-16	285	4039	846.5	220	730.5	15.9%	R
Aug-16	225	3950	827.8	220	730.5	13.3%	R
Sep-16	235	3759	787.8	220	730.5	7.8%	R
Oct-16	190	3501	733.7	220	730.5	0.4%	A
Nov-16				220	730.5		
Dec-16				220	730.5		
Jan-17				220	730.5		
Feb-17				220	730.5		
Mar-17				220	730.5		

CSC Commentary
 Our referral rate whilst it remains higher than our Regional colleagues is moving to be more in line and our performance moving into amber. The reduction in the number of contacts being moved through to referrals is starting to be reflected in this performance target.

Definition
 Number of referrals (rolling 12 months) divided by the population of 0-17 year olds in Peterborough multiplied by 10,000

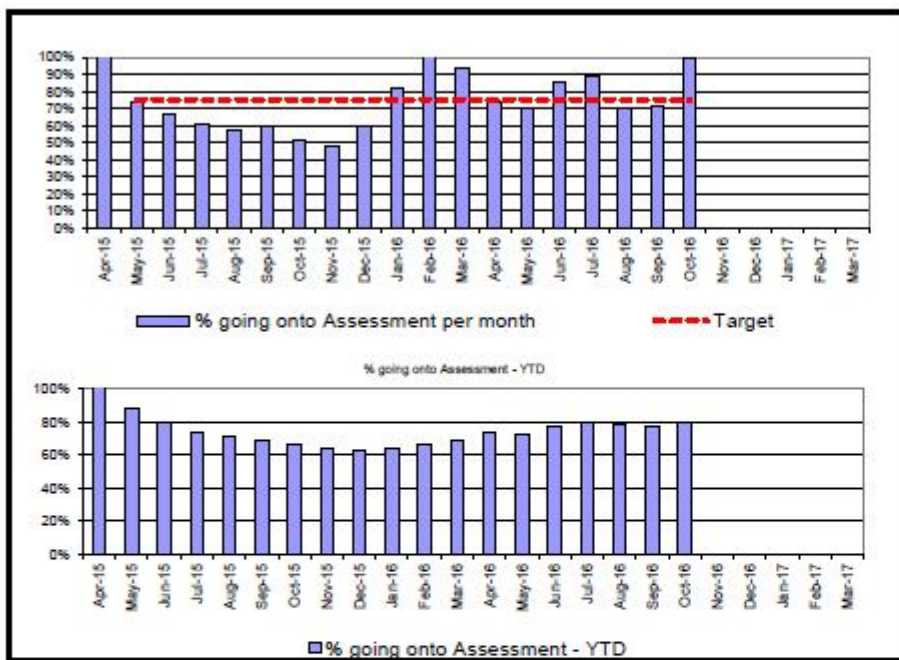
Population for denominator: 47715

G <= 730.5 **A** = 730-745 **R** > 745

Year	PCC Result	SN Result	ER Result	ENG Result
2013-14	577.7	730.5		573.0
2014-15	586.6	767.8	437.9	548.3
2015-16				

Chart 3

Referrals progressing to Single Assessment October 2016



Month	Assess	Refs	% assess	% YTD	Target	Var	RAG
Apr-15	342	319	107.2%	107.2%	75.1%	32%	A
May-15	309	418	73.9%	88.3%	75.1%	-1%	A
Jun-15	335	505	66.3%	79.4%	75.1%	-9%	R
Jul-15	324	538	60.2%	73.6%	75.1%	-15%	R
Aug-15	179	314	57.0%	71.1%	75.1%	-18%	R
Sep-15	254	426	59.6%	69.2%	75.1%	-15%	R
Oct-15	233	448	52.0%	66.6%	75.1%	-23%	R
Nov-15	260	539	48.2%	63.8%	75.1%	-27%	R
Dec-15	237	394	60.2%	63.4%	75.1%	-15%	R
Jan-16	232	283	82.0%	64.7%	75.1%	7%	A
Feb-16	237	227	104.4%	66.7%	75.1%	29%	A
Mar-16	279	296	94.3%	68.4%	75.1%	19%	A
Apr-16	180	243	74.1%	74.1%	75.1%	-1%	A
May-16	195	276	70.7%	72.3%	75.1%	-4%	A
Jun-16	279	328	85.1%	77.2%	75.1%	10%	A
Jul-16	236	265	89.1%	80.0%	75.1%	14%	A
Aug-16	159	225	70.7%	78.5%	75.1%	-4%	A
Sep-16	168	235	71.5%	77.4%	75.1%	-4%	A
Oct-16	189	190	99.5%	79.8%	75.1%	24%	A
Nov-16							
Dec-16							
Jan-17							
Feb-17							
Mar-17							

YTD:	1,406	1,762	-	79.8%	75.1%	4.7	A
------	-------	-------	---	-------	-------	-----	---

Definition
 The percentage of children referred to children's social services departments whose cases go on to single assessments. The numerator is the number of single assessments started in the period recorded on ICMS. The denominator is the number of referrals in the period recorded on ICMS.

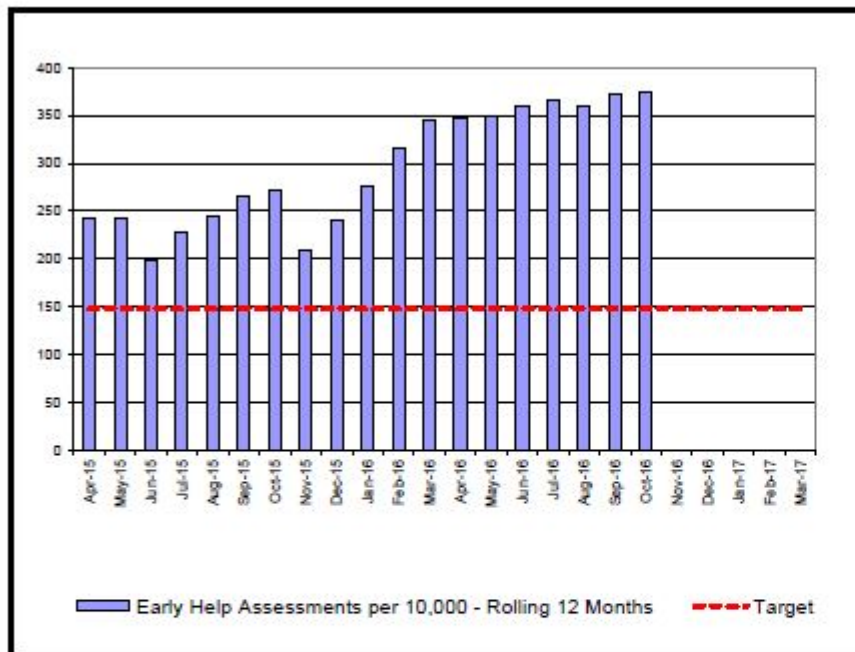
G = 75.1%	A > 70%	R < 70%
-----------	---------	---------

Year	PCC Result	SN Result	ENG Result
2013-14	20.1%	19.3%	19.4%
2014-15	39.0%	16.0%	23.0%
2015-16			

CSC Commentary
 Conversions to assessments has increased this month and is now showing as red as it considerably above the 75% target set. It is recognised that we are completing too many assessments in relation to statistical neighbours but it is difficult to make any substantive commentary on this at this time but this will be reviewed over the coming month to better understand the performance.

Chart 4

Early Help Assessments per 10,000 - Rolling 12 Months October 2016



Month	EHAs	12 Mths	Rate
Apr-15	101	650	242.0
May-15	133	772	242.4
Jun-15	150	922	197.9
Jul-15	138	1060	227.5
Aug-15	82	1142	245.1
Sep-15	95	1237	265.5
Oct-15	115	1268	271.7
Nov-15	170	984	208.6
Dec-15	158	1142	240.3
Jan-16	186	1328	276.6
Feb-16	188	1516	315.7
Mar-16	140	1656	344.0
Apr-16	97	1652	346.2
May-16	150	1669	349.8
Jun-16	197	1716	359.8
Jul-16	168	1746	365.9
Aug-16	54	1718	360.1
Sep-16	149	1772	371.4
Oct-16	132	1789	374.9
Nov-16			
Dec-16			
Jan-17			
Feb-17			
Mar-17			

Target	Var.	RAG
147.9	63.6%	
147.9	63.9%	
147.9	33.8%	
147.9	53.8%	
147.9	65.7%	
147.9	79.5%	
147.9	83.7%	
147.9	41.0%	
147.9	62.5%	
147.9	87.0%	
147.9	113.4%	
147.9	132.6%	
147.9	134.1%	
147.9	136.5%	
147.9	143.2%	
147.9	147.4%	
147.9	143.4%	
147.9	151.1%	
147.9	153.5%	
147.9		
147.9		
147.9		
147.9		

CSC Commentary
 The number of Early Help Assessments initiated in October has remained fairly constant taking into account the October half term with 17 more Early Help Assessment initiated in October 2016 compared to 2015. The number on the report is accurate and reflective of the information on the system on the day of the report, but is not reflective of cases that are entered onto the system and back-dated. The current rate of 374.9 per 10,000 is considerably greater than the target set of 147.9 per 10,000 and is the highest variance achieved on this set of data.

Definition
 The rate is the number of new EHAs recorded in the previous 12 months divided by the population of 0-17 year olds in Peterborough multiplied by 10,000. The number of EHAs is taken from the local EHA tracker database and is not externally valid.

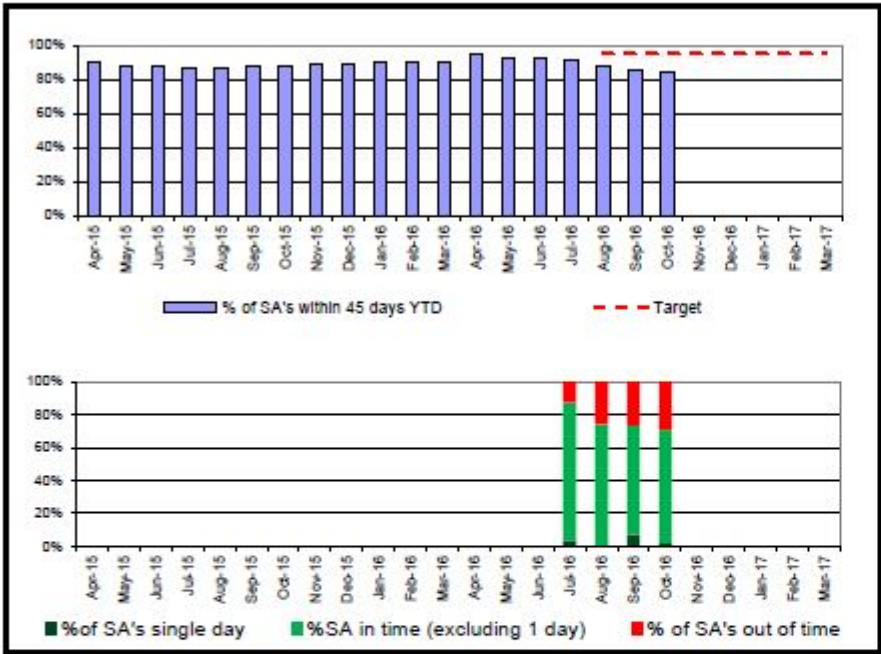
Population for denominator: 47715

G = TBC A = TBC R = TBC

Year	PCC Result	ER Result	ENG Result
2012/13	-	-	-
2013/14	-	-	-
2014/15	234.6	131.9	-

Chart 5

Single Assessment Timescales (within 45 working days) October 2016



Month	SA 45	SA >45	SA 1 day	SA All	% Mnth	% YTD	Target	RAG
Apr-15	259	29	3	288	89.9%	89.9%	95.0%	R
May-15	283	44	4	327	86.5%	88.1%	95.0%	R
Jun-15	296	41	10	337	87.8%	88.0%	95.0%	R
Jul-15	322	67	22	389	82.8%	86.5%	95.0%	R
Aug-15	270	34	6	304	88.8%	86.9%	95.0%	R
Sep-15	242	19	8	261	92.7%	87.7%	95.0%	A
Oct-15	248	24	10	272	91.2%	88.2%	95.0%	A
Nov-15	229	10	4	239	95.8%	88.9%	95.0%	G
Dec-15	210	9	14	219	95.9%	89.5%	95.0%	G
Jan-16	227	4	14	231	98.3%	90.2%	95.0%	G
Feb-16	193	14	8	207	93.2%	90.4%	95.0%	A
Mar-16	214	15	4	229	93.4%	90.6%	95.0%	A
Apr-16	228	13	3	241	94.6%	94.6%	95.0%	A
May-16	217	23	5	240	90.4%	92.5%	95.0%	A
Jun-16	186	12	6	178	93.3%	92.7%	95.0%	A
Jul-16	196	29	9	225	87.1%	91.3%	95.0%	R
Aug-16	208	72	2	280	74.3%	87.2%	95.0%	R
Sep-16	131	47	13	178	73.6%	85.4%	95.0%	R
Oct-16	112	46	3	158	70.9%	83.9%	95.0%	R
Nov-16								
Dec-16								
Jan-17								
Feb-17								
Mar-17								

YTD:	1258	242	41	1500	--	83.9%	95.0%	R
------	------	-----	----	------	----	-------	-------	---

Definition
 The number of single assessments YTD completed within 45 working days from the start of the referral start, as a percentage of the number of single assessments completed YTD.

G =95%	A >90%	R <90%
--------	--------	--------

Year	PCC Re	SN Result	ER Result	ENG Result
2012-13				
2013-14				
2014-15	90.0%	79.0%	88.0%	81.5%

CSC Commentary
 Given pressures within the First Response Service there has continued to be a further dip in terms of assessments being completed within 45 days with 70% of assessments being completed within statutory timescales. This has had an impact on the YTD figure (83.9%) which remains short of the 95% target.

Chart 6

Re-referrals within 12 months October 2016



Month	Re-Refs	Refs	% Mnth	% YTD	Target	Var	RAG
Apr-15	70	319	21.9%	21.9%	24.3%	-2.4	G
May-15	94	418	22.5%	22.3%	24.3%	-2.0	A
Jun-15	106	505	21.0%	21.7%	24.3%	-2.6	G
Jul-15	129	538	24.0%	22.4%	24.3%	-1.9	A
Aug-15	101	314	32.2%	23.9%	24.3%	-0.4	R
Sep-15	127	426	29.8%	24.9%	24.3%	0.6	R
Oct-15	160	448	35.7%	26.5%	24.3%	2.2	R
Nov-15	150	539	27.8%	26.7%	24.3%	2.4	R
Dec-15	123	394	31.2%	27.2%	24.3%	2.9	R
Jan-16	100	283	35.3%	27.7%	24.3%	3.4	R
Feb-16	86	227	37.9%	28.2%	24.3%	3.9	R
Mar-16	93	296	31.4%	28.4%	24.3%	4.1	R
Apr-16	64	243	26.3%	26.3%	24.3%	2.0	R
May-16	73	276	26.4%	26.4%	22.0%	4.4	R
Jun-16	121	328	36.9%	30.5%	22.0%	8.5	R
Jul-16	67	265	25.3%	29.2%	22.0%	7.2	R
Aug-16	52	225	23.1%	28.2%	22.0%	6.2	A
Sep-16	61	235	26.0%	27.9%	22.0%	5.9	R
Oct-16	59	190	31.1%	28.2%	22.0%	6.2	R
Nov-16					22.0%		
Dec-16					22.0%		
Jan-17					22.0%		
Feb-17					22.0%		
Mar-17					22.0%		

CSC Commentary
 There has been a slight increase in the re-referral rate this month although this has had a little impact on the YTD figure which sits at 28.2% which is higher than the target set (22%). This continues to be an area that requires further scrutiny and will be assisted by the developing dashboard on Early Help outcomes and increased scrutiny by the MASH Team Manager.

YTD:	497	1,762	--	28.2%	22.0%	6.2	R
------	-----	-------	----	-------	-------	-----	---

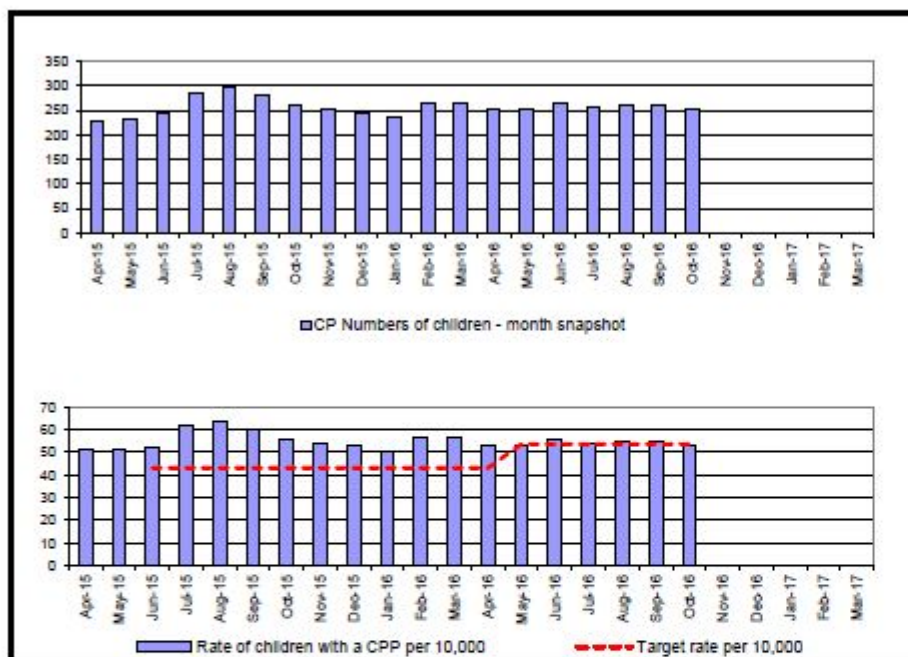
Definition
 The percentage of referrals where a previous referral has occurred within the last 12 months. If a child has more than one re-referral in the year, each one will be counted.

G<=22.0%
A>22%
R>24%

Year	PCC Result	SN Result	ENG Result
2013-14	21.8%	26.0%	23.4%
2014-15	18.3%	25.8%	24.0%
2015-16			

Chart 7

Number of Children with a Child Protection Plan per 10,000 October 2016



Month	CP	Pop.	Rate	Target	Variance	RAG
Apr-15	229	45000	50.9	43.1	18.1%	A
May-15	231	45000	51.3	43.1	19.1%	A
Jun-15	244	46600	52.4	43.1	21.5%	A
Jul-15	286	46600	61.4	43.1	42.4%	R
Aug-15	298	46600	63.9	43.1	48.4%	R
Sep-15	279	46600	59.9	43.1	38.9%	R
Oct-15	259	46600	55.8	43.1	29.0%	R
Nov-15	252	46600	54.1	43.1	25.5%	A
Dec-15	245	46600	52.8	43.1	22.0%	A
Jan-16	237	46600	50.9	43.1	18.0%	A
Feb-16	265	46600	56.9	43.1	31.9%	R
Mar-16	265	46600	56.9	43.1	31.9%	R
Apr-16	252	47715	52.8	43.1	22.5%	A
May-16	254	47715	53.2	53.6	-0.7%	G
Jun-16	264	47715	55.3	53.6	3.2%	A
Jul-16	256	47715	53.7	53.6	0.1%	G
Aug-16	260	47715	54.5	53.6	1.7%	A
Sep-16	262	47715	54.9	53.6	2.4%	A
Oct-16	252	47715	52.8	53.6	-1.5%	A
Nov-16						
Dec-16						
Jan-17						
Feb-17						
Mar-17						

CSC Commentary
 A slight decrease this month to below our own target is reflective of the volatility of this number. When looking at the last 12 months the average has decreased slightly with the expectation to reduce CP numbers to CIN where safe and appropriate to do so.

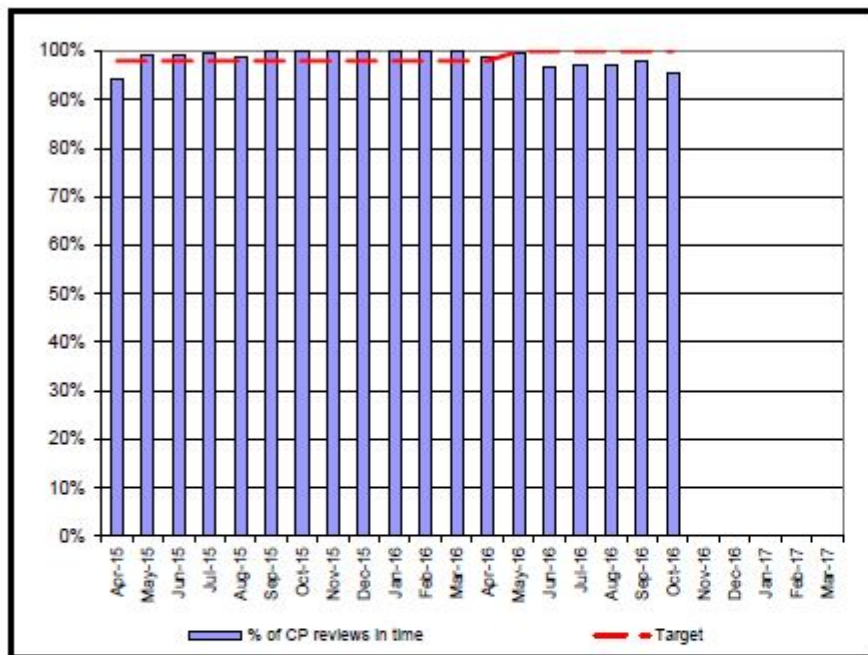
Definition
 Number of children with a current child protection plan divided by the population of 0-17 year olds in Peterborough multiplied by 10,000.
 The number of children is taken as a snapshot count at the end of each month
 Population for denominator: 47715

G = 53.6 A < 55 R > 55

Year	PCC Result	SN Result	ENG Result
2013-14	52.4	43.1	42.1
2014-15	49.6	55.5	42.9
2015-16			

Chart 8

Child Protection Reviews within timescales October 2016



Month	Num.	Denom	% of CP	Target	Variance	RAG
Apr-15	131	139	94.2%	98.0%	-3.8	R
May-15	123	124	99.2%	98.0%	1.2	A
Jun-15	139	140	99.3%	98.0%	1.3	A
Jul-15	164	165	99.4%	98.0%	1.4	A
Aug-15	165	167	98.8%	98.0%	0.8	A
Sep-15	177	177	100.0%	98.0%	2.0	G
Oct-15	211	211	100.0%	98.0%	2.0	G
Nov-15	207	207	100.0%	98.0%	2.0	G
Dec-15	198	198	100.0%	98.0%	2.0	G
Jan-16	175	175	100.0%	98.0%	2.0	G
Feb-16	185	185	100.0%	98.0%	2.0	G
Mar-16	145	145	100.0%	98.0%	2.0	G
Apr-16	190	192	99.0%	98.0%	1.0	A
May-16	171	172	99.4%	100.0%	-0.6	A
Jun-16	172	178	96.6%	100.0%	-3.4	R
Jul-16	173	178	97.2%	100.0%	-2.8	R
Aug-16	173	178	97.2%	100.0%	-2.8	R
Sep-16	179	183	97.8%	100.0%	-2.2	R
Oct-16	172	180	95.6%	100.0%	-4.4	R
Nov-16						
Dec-16						
Jan-17						
Feb-17						
Mar-17						

CSC Commentary
 There has been a drop in performance in this area over the last few months, with a slight improvement, but overall expectations are to move back to 100% compliant.

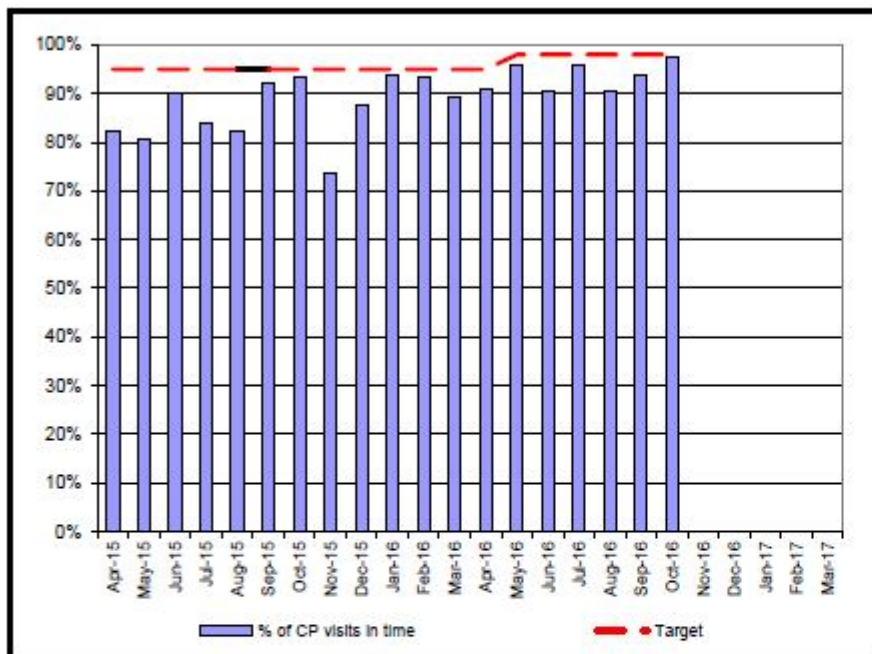
Definition
 The percentage of children with a Child Protection Plan for at least the previous three months, reviewed within the required timescales.

G = 100% **A >98% <100%** **R <98%**

Year	PCC Result	SN Result	ENG Result
2013-14	95.8%	98.0%	94.6%
2014-15	93.4%	91.7%	94.0%
2015-16			

Chart 9

Child protection statutory visits in time October 2016



Month	Num.	Denom.	% of CP	Target	Variance	RAG
Apr-15	185	201	82.1%	95.0%	-12.9	R
May-15	169	209	80.9%	95.0%	-14.1	R
Jun-15	191	212	90.1%	95.0%	-4.9	R
Jul-15	195	232	84.1%	95.0%	-10.9	R
Aug-15	225	274	82.1%	95.0%	-12.9	R
Sep-15	249	270	92.2%	95.0%	-2.8	R
Oct-15	231	247	93.5%	95.0%	-1.5	R
Nov-15	174	236	73.7%	95.0%	-21.3	R
Dec-15	206	235	87.7%	95.0%	-7.3	R
Jan-16	195	208	93.8%	95.0%	-1.3	R
Feb-16	226	242	93.4%	95.0%	-1.6	R
Mar-16	216	242	89.3%	95.0%	-5.7	R
Apr-16	220	242	90.9%	95.0%	-4.1	R
May-16	210	219	95.9%	98.0%	-2.1	R
Jun-16	214	236	90.7%	98.0%	-7.3	R
Jul-16	226	236	95.8%	98.0%	-2.2	R
Aug-16	222	245	90.6%	98.0%	-7.4	R
Sep-16	225	240	93.8%	98.0%	-4.3	R
Oct-16	227	233	97.4%	98.0%	-0.6	A
Nov-16						
Dec-16						
Jan-17						
Feb-17						
Mar-17						

CSC Commentary

The number of CP visits carried out over some months has been improving , with a positive increase this month with targeted management through supervision to ensure future visits are planned, with some capacity to ensure a missed visit or planned holiday will be anticipated to enable a follow up visit still remains in timescale.

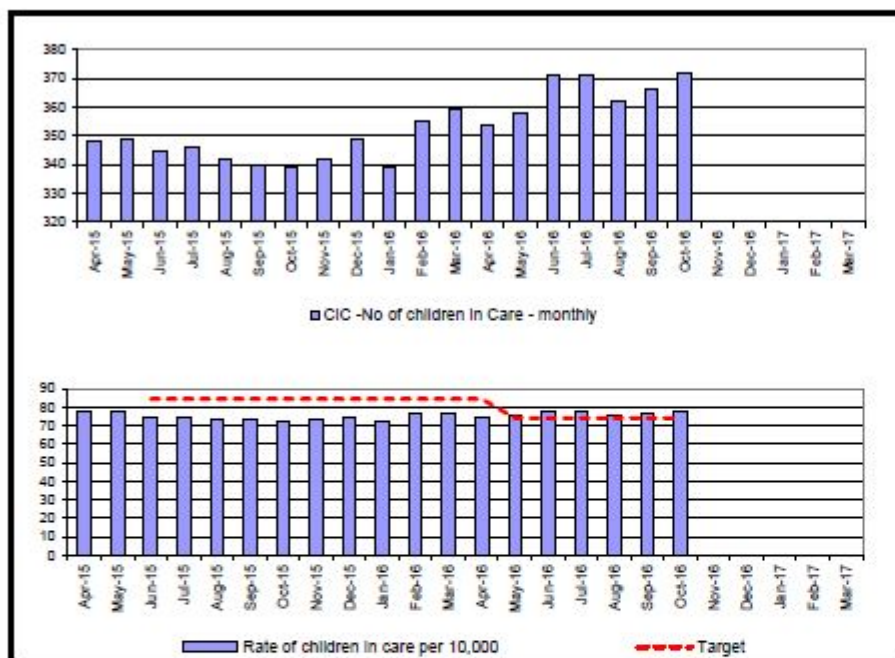
Definition

Of all children subject to a child protection plan for more than 4 weeks, the number and percentage of visits that were done within the 4 week deadline. This is snapshot data taken at the month end.

G = 98%	A > 96-98%	R < 96%
---------	------------	---------

Chart 10

Number of Children in Care per 10,000 October 2016



Month	CiC -	Pop.	Rate of	Target	Variance	RAG
Apr-15	348	45000	77.3	84.4	-8.4%	A
May-15	349	45000	77.8	84.4	-8.1%	A
Jun-15	345	46600	74.0	84.4	-12.3%	G
Jul-15	348	46600	74.2	84.4	-12.0%	A
Aug-15	342	46600	73.4	84.4	-13.0%	G
Sep-15	340	46600	73.0	84.4	-13.6%	G
Oct-15	339	46600	72.7	84.4	-13.8%	G
Nov-15	342	46600	73.4	84.4	-13.0%	G
Dec-15	349	46600	74.9	84.4	-11.3%	A
Jan-16	339	46600	72.7	84.4	-13.8%	G
Feb-16	355	46600	76.2	84.4	-9.7%	A
Mar-16	359	46600	77.0	84.4	-8.7%	A
Apr-16	354	47715	74.2	84.4	-12.1%	G
May-16	358	47715	75.0	74.0	1.4%	A
Jun-16	371	47715	77.8	74.0	5.1%	A
Jul-16	371	47715	77.8	74.0	5.1%	A
Aug-16	362	47715	75.9	74.0	2.5%	A
Sep-16	366	47715	76.7	74.0	3.7%	A
Oct-16	372	47715	78.0	74.0	5.4%	A
Nov-16						
Dec-16						
Jan-17						
Feb-17						
Mar-17						

CSC Commentary
 The number of children in care in October rose by 6 children being accommodated. There was a sibling group of 3 accommodated via PPP who were unknown to Peterborough children's services at the time of the order being taken out.

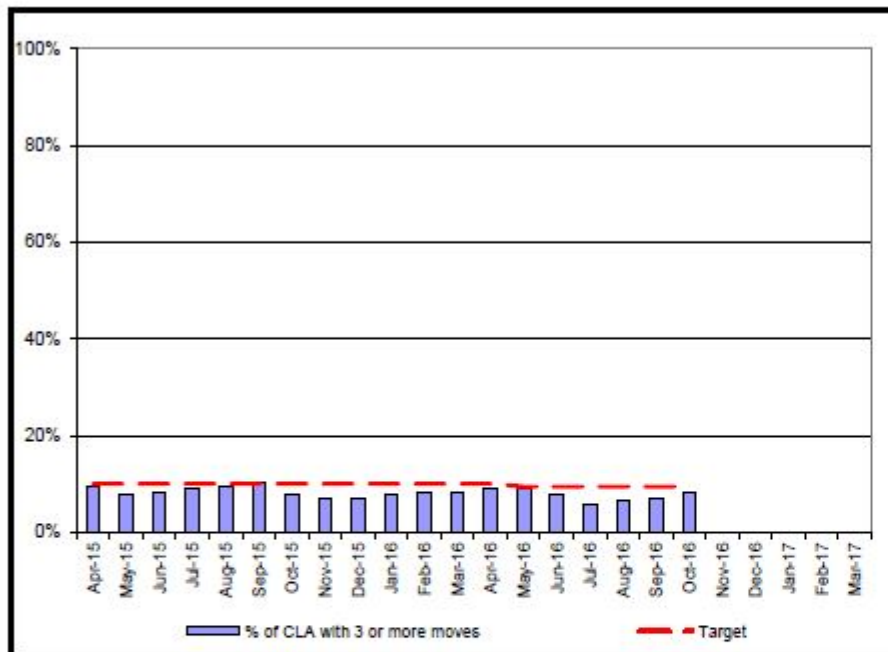
Definition
 Number of children in care divided by the population of 0-17 year olds in Peterborough multiplied by 10,000
 The number of children in care is taken as a snapshot count at the end of each month
 Population for denominator: 47715

G <=74.0 A >74.0 R >79.4

Year	PCC Result	SN Result	ENG Result
2013-14	80.0	77.2	60.0
2014-15	74.0	79.4	60.0
2015-16	75.0	79.5	60.0

Chart 11

Placement Stability: 3 or more placements during previous 12 months for CiC October 2016



Month	Num.	Denom.	% of CLA with	Target	Variance	RAG
Apr-15	33	348	9.5%	10.1%	-0.6	G
May-15	28	349	8.0%	10.1%	-2.1	G
Jun-15	29	345	8.4%	10.1%	-1.7	G
Jul-15	32	346	9.2%	10.1%	-0.9	G
Aug-15	33	342	9.6%	10.1%	-0.5	A
Sep-15	35	340	10.3%	10.1%	0.2	A
Oct-15	28	339	7.7%	10.1%	-2.4	G
Nov-15	24	342	7.0%	10.1%	-3.1	G
Dec-15	25	349	7.2%	10.1%	-2.9	G
Jan-16	26	339	7.7%	10.1%	-2.4	G
Feb-16	29	355	8.2%	10.1%	-1.9	G
Mar-16	30	359	8.4%	10.1%	-1.7	G
Apr-16	32	354	9.0%	10.1%	-1.1	G
May-16	32	358	8.9%	9.5%	-0.6	G
Jun-16	29	371	7.8%	9.5%	-1.7	G
Jul-16	21	371	5.7%	9.5%	-3.8	G
Aug-16	24	362	6.6%	9.5%	-2.9	G
Sep-16	28	368	7.1%	9.5%	-2.4	G
Oct-16	30	372	8.1%	9.5%	-1.4	G
Nov-16						
Dec-16						
Jan-17						
Feb-17						
Mar-17						

CSC Commentary
 The downward trend in this indicator for October remains within the good performance target. The variance has increased but this links to the increase in children being accommodated in October.

Definition
 The percentage of children in care at any given time with three or more placements during the last 12 months.

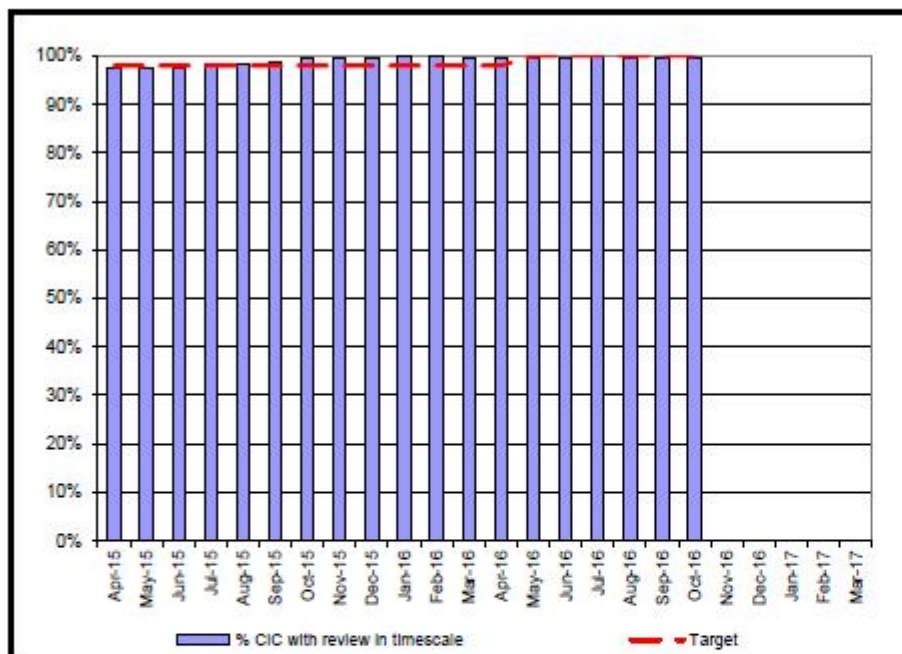
Population for denominator: 46600

G <= 9.5% A > 9.5-11.3% R > 11.3

Year	PCC Result	SN Result	ENG Result
2013-14	8.0%	11.3%	11.0%
2014-15	8.5%		
2015-16			

Chart 12

Children in Care Reviews held within timescales October 2016



Month	Num.	Denom.	% CiC	Target	Variance	RAG
Apr-15	330	338	97.6%	98.0%	-0.4	R
May-15	330	339	97.3%	98.0%	-0.7	R
Jun-15	322	330	97.6%	98.0%	-0.4	R
Jul-15	326	332	98.2%	98.0%	0.2	A
Aug-15	331	337	98.2%	98.0%	0.2	A
Sep-15	330	334	98.8%	98.0%	0.8	A
Oct-15	326	327	99.7%	98.0%	1.7	A
Nov-15	335	336	99.7%	98.0%	1.7	A
Dec-15	344	345	99.7%	98.0%	1.7	A
Jan-16	329	329	100.0%	98.0%	2.0	G
Feb-16	333	333	100.0%	98.0%	2.0	G
Mar-16	344	345	99.7%	98.0%	1.7	A
Apr-16	347	348	99.7%	98.0%	1.7	A
May-16	350	351	99.7%	100.0%	-0.3	A
Jun-16	347	348	99.7%	100.0%	-0.3	A
Jul-16	365	366	99.7%	100.0%	-0.3	A
Aug-16	355	356	99.7%	100.0%	-0.3	A
Sep-16	353	354	99.7%	100.0%	-0.3	A
Oct-16	360	362	99.4%	100.0%	-0.6	A
Nov-16						
Dec-16						
Jan-17						
Feb-17						
Mar-17						

CSC Commentary

October data indicates 2 reviews were not intimescale. This indicator looks at children who have been in care for 1 month or more and then checks if their reviews over the previous 12 months were in timescale. The issue relates to 2 children's reviews being late in July.

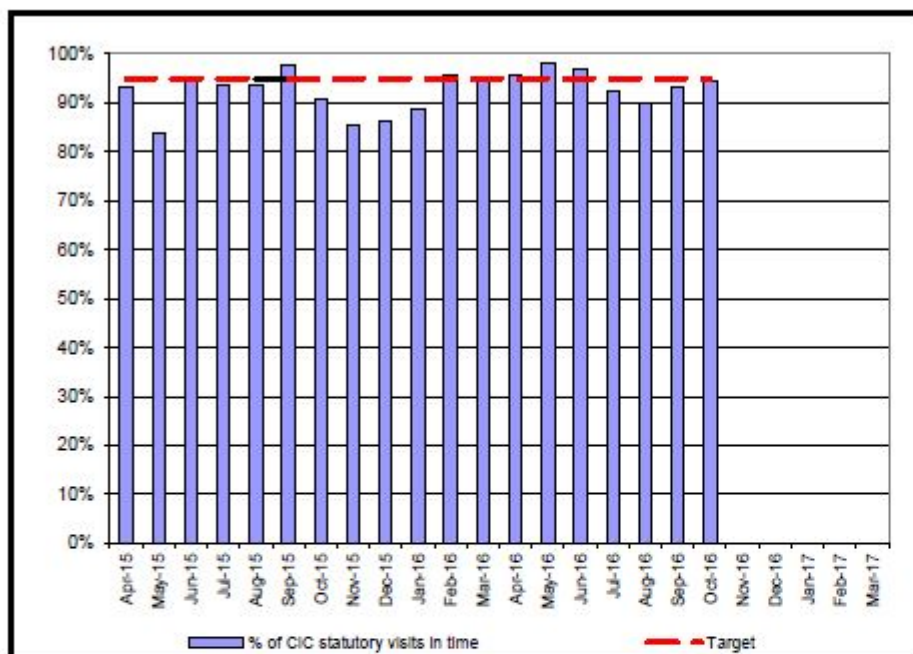
Definition

The percentage of Looked after children for at least one month, whose case was reviewed within the required timescales. The denominator is children who are LAC for at least one month at the end of the reporting month. The numerator is the number of children who have not had a review in the last 12 months recorded as outside of timescale.



Chart 13

Children in care statutory visits in time October 2016



Month	Num.	Denom.	% of	Target	Variance	RAG
Apr-15	307	329	93.3%	95.0%	-1.7	A
May-15	278	332	83.7%	95.0%	-11.3	R
Jun-15	308	324	95.1%	95.0%	0.1	G
Jul-15	300	320	93.8%	95.0%	-1.3	A
Aug-15	311	332	93.7%	95.0%	-1.3	A
Sep-15	320	328	97.6%	95.0%	2.6	G
Oct-15	295	325	90.8%	95.0%	-4.2	A
Nov-15	285	334	85.3%	95.0%	-9.7	R
Dec-15	288	332	88.1%	95.0%	-8.9	R
Jan-16	287	324	88.6%	95.0%	-6.4	R
Feb-16	313	327	95.7%	95.0%	0.7	G
Mar-16	318	334	95.2%	95.0%	0.2	G
Apr-16	333	348	95.7%	95.0%	0.7	G
May-16	339	348	98.0%	95.0%	3.0	G
Jun-16	327	337	97.0%	95.0%	2.0	G
Jul-16	327	354	92.4%	95.0%	-2.6	A
Aug-16	317	353	89.8%	95.0%	-5.2	R
Sep-16	325	348	93.4%	95.0%	-1.6	A
Oct-16	333	352	94.6%	95.0%	-0.4	A
Nov-16						
Dec-16						
Jan-17						
Feb-17						
Mar-17						

CSC Commentary

October performance data indicates an improvement on statutory visits occurring within timescale. Systems and process are being reviewed to ensure forward planning for all planned statutory visiting.

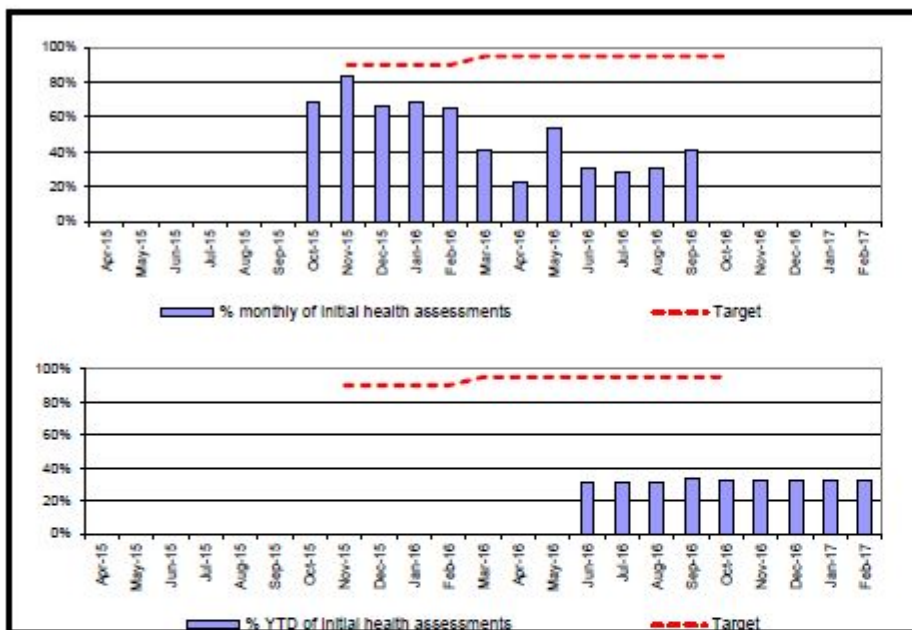
Definition

Of all Children in Care that have been looked after for more than 6 weeks, the number and percentage of visits that were completed within the 6 week deadline (or within three months for those Children in Care that have been looked after for more than 12 months and whose placement is deemed to be permanent). This is snapshot data taken at the month end.

G = 95% **A > 90%** **R < 90%**

Chart 14

Initial health assessments completed within 20 working days of child entering care October 2016



Month	Init.HA	CiC St	%	% YTD	Target	Var	RAG
Apr-15	8	10					
May-15	6	13					
Jun-15	12	22					
Jul-15	4	15					
Aug-15	10	13					
Sep-15	6	11					
Oct-15	11	16	68.8%	0.0%			
Nov-15	10	12	83.3%	0.0%	90.0%		
Dec-15	6	9	66.7%	0.0%	90.0%		
Jan-16	13	19	68.4%	0.0%	90.0%		
Feb-16	13	20	65.0%	0.0%	90.0%		
Mar-16	9	22	40.9%	0.0%	95.0%		
Apr-16	2	9	22.2%	0.0%	95.0%	-95.0	R
May-16	7	13	53.8%	0.0%	95.0%	-95.0	R
Jun-16	9	29	31.0%	31.0%	95.0%	-64.0	R
Jul-16	2	7	28.6%	30.6%	95.0%	-64.4	R
Aug-16	4	13	30.8%	30.8%	95.0%	-64.4	R
Sep-16	7	17	41.2%	33.3%	95.0%	-61.7	R
Oct-16	0	1	0.0%	32.8%	95.0%	-62.2	R
Nov-16				32.8%		32.8	
Dec-16				32.8%		32.8	
Jan-17				32.8%		32.8	
Feb-17				32.8%		32.8	

YTD:	40	111	--	36.0%	95.0%	-59.0	R
------	----	-----	----	-------	-------	-------	---

CSC Commentary
 In October there were 14 IHA carried out, and 10 were completed within the 20 day timescale, this equates to 71.5%. The 4 assessments completed outside of timescale were due to appointments offered but non attendance x 2, and a delay due to a legal matter for the other 2.

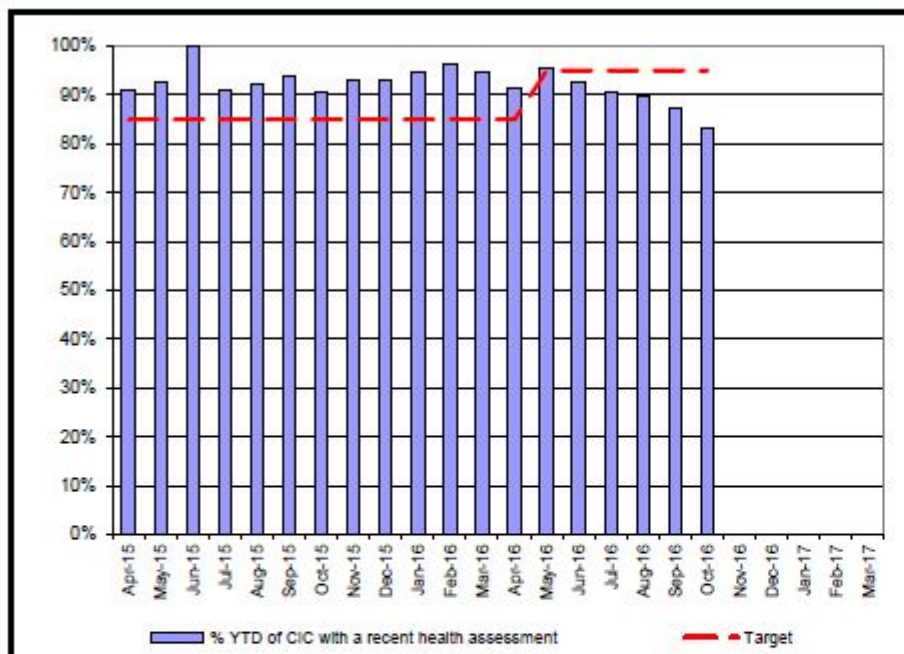
Definition
 The number of children becoming looked after that have an initial health assessment recorded within 20 working days of the child entering care. The number of children is measured one month in arrears to enable time for the 20 day period to elapse and excludes cases where the episode of care was closed within 20 days and also children entering care because they have been placed on remand (because the remand institution is responsible for completing the initial health assessment).

G >= 95%	A > 85 -95%	R < 85%
----------	-------------	---------

50

Chart 15

Health of Children in Care - Annual Health Assessments October 2016



Month	Num.	Denom.	% YTD	Target	Variance	RAG
Apr-15	232	255	91.0%	85.0%	6.0	A
May-15	237	256	92.6%	85.0%	7.6	A
Jun-15	253	253	100.0%	85.0%	15.0	G
Jul-15	219	241	90.9%	85.0%	5.9	A
Aug-15	221	240	92.1%	85.0%	7.1	A
Sep-15	224	239	93.7%	85.0%	8.7	A
Oct-15	210	232	90.5%	85.0%	5.5	A
Nov-15	216	232	93.1%	85.0%	8.1	A
Dec-15	212	228	93.0%	85.0%	8.0	A
Jan-16	211	223	94.6%	85.0%	9.6	A
Feb-16	210	218	96.3%	85.0%	11.3	G
Mar-16	212	224	94.6%	85.0%	9.6	A
Apr-16	211	231	91.3%	85.0%	6.3	A
May-16	230	241	95.4%	95.0%	0.4	G
Jun-16	215	232	92.7%	95.0%	-2.3	A
Jul-16	207	228	90.8%	95.0%	-4.2	A
Aug-16	211	235	89.8%	95.0%	-5.2	A
Sep-16	210	241	87.1%	95.0%	-7.9	A
Oct-16	200	240	83.3%	95.0%	-11.7	R
Nov-16						
Dec-16						
Jan-17						
Feb-17						
Mar-17						

CSC Commentary
 Performance for this target continues to slip. Underlying factors continue to affect this indicator remain static with a significant number of teenagers refusing to engage in the process. The system and process factors will be reviewed by the new interim HOS for CIC to work on improving this target.

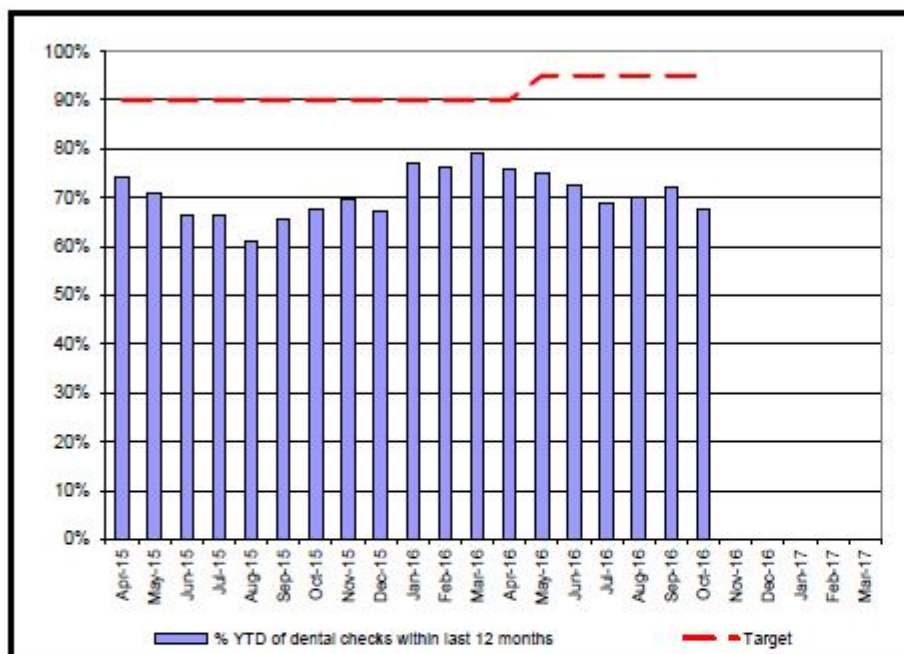
Definition
 Of the children who had been in care for at least 12 months the proportion who had an annual health assessment during the previous 12 months.

G >= 95% A > 85% R < 85%

Year	PCC Result	SN Result	ENG Result
2013-14	93.9%	89.1%	88.4%
2014-15			
2015-16			

Chart 16

Children in care (aged 3-17 years) with dental checks held within previous 12 months October 2016



Month	Num.	Denom.	% YTD	Target	Variance	RAG
Apr-15	213	287	74.2%	90.0%	-15.8	R
May-15	206	291	70.8%	90.0%	-19.2	R
Jun-15	195	293	66.6%	90.0%	-23.4	R
Jul-15	194	292	66.4%	90.0%	-23.6	R
Aug-15	176	289	60.9%	90.0%	-29.1	R
Sep-15	191	291	65.8%	90.0%	-24.4	R
Oct-15	196	289	67.8%	90.0%	-22.2	R
Nov-15	204	293	69.6%	90.0%	-20.4	R
Dec-15	198	295	67.1%	90.0%	-22.9	R
Jan-16	222	288	77.1%	90.0%	-12.9	R
Feb-16	229	301	76.1%	90.0%	-13.9	R
Mar-16	244	308	79.2%	90.0%	-10.8	R
Apr-16	239	315	75.9%	90.0%	-14.1	R
May-16	235	313	75.1%	95.0%	-19.9	R
Jun-16	235	323	72.8%	95.0%	-22.2	R
Jul-16	223	323	69.0%	95.0%	-26.0	R
Aug-16	221	315	70.2%	95.0%	-24.8	R
Sep-16	226	314	72.0%	95.0%	-23.0	R
Oct-16	215	318	67.6%	95.0%	-27.4	R
Nov-16						
Dec-16						
Jan-17						
Feb-17						
Mar-17						

CSC Commentary

The slight improvement seen in August has declined in September and the underlying factors outlined last month remain static at this time. They are young people refusing to have dental checks and delays in young people seeing a dentist for check ups.

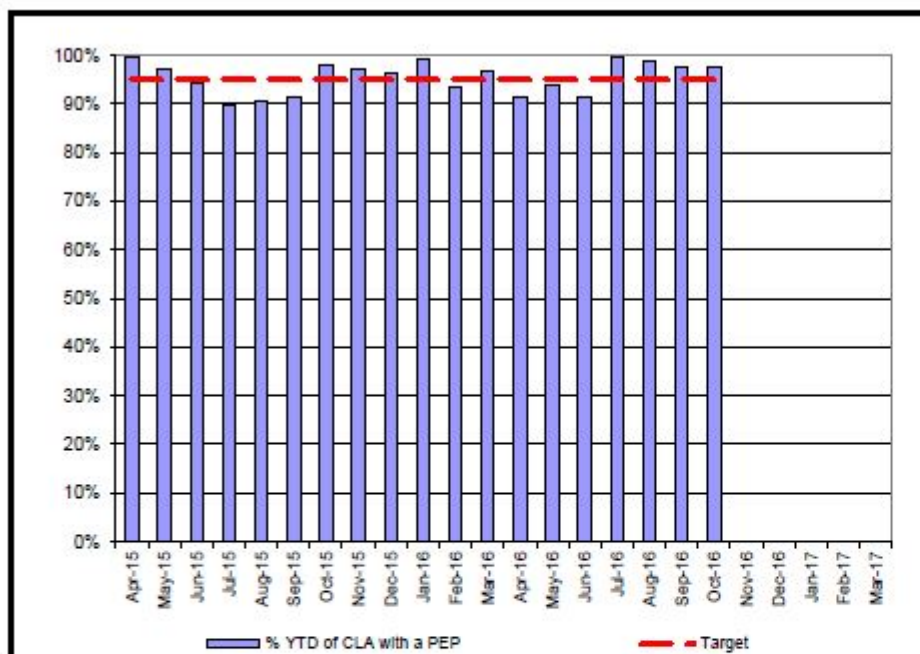
Definition

The percentage of children looked after who have had a dental check within the previous 12 months. Children looked after aged between 3 and 17 years old that have a dental check recorded on Liquidlogic that was completed within the previous 12 months. The denominator is the number of children looked after (3 - 17) at the month end.

G >= 95%	A > 90%	R < 90%
----------	---------	---------

Chart 17

Personal Education Plans (PEPs) October 2016



Month	Num.	Denom.	% YTD	Target	Variance	RAG
Apr-15	213	214	99.5%	95.0%	4.5	G
May-15	214	220	97.3%	95.0%	2.3	G
Jun-15	212	225	94.2%	95.0%	-0.8	G
Jul-15	206	230	89.6%	95.0%	-5.4	R
Aug-15	193	213	90.6%	95.0%	-4.4	A
Sep-15	196	213	91.5%	95.0%	-3.5	A
Oct-15	206	210	98.1%	95.0%	3.1	G
Nov-15	215	221	97.3%	95.0%	2.3	G
Dec-15	214	222	96.4%	95.0%	1.4	G
Jan-16	216	218	99.1%	95.0%	4.1	G
Feb-16	217	232	93.5%	95.0%	-1.5	A
Mar-16	232	240	96.7%	95.0%	1.7	G
Apr-16	222	243	91.4%	95.0%	-3.6	A
May-16	233	248	94.0%	95.0%	-1.0	A
Jun-16	232	254	91.3%	95.0%	-3.7	A
Jul-16	253	254	99.6%	95.0%	4.6	G
Aug-16	250	253	98.8%	95.0%	3.8	G
Sep-16	219	224	97.8%	95.0%	2.8	G
Oct-16	219	224	97.8%	95.0%	2.8	G
Nov-16						
Dec-16						
Jan-17						
Feb-17						
Mar-17						

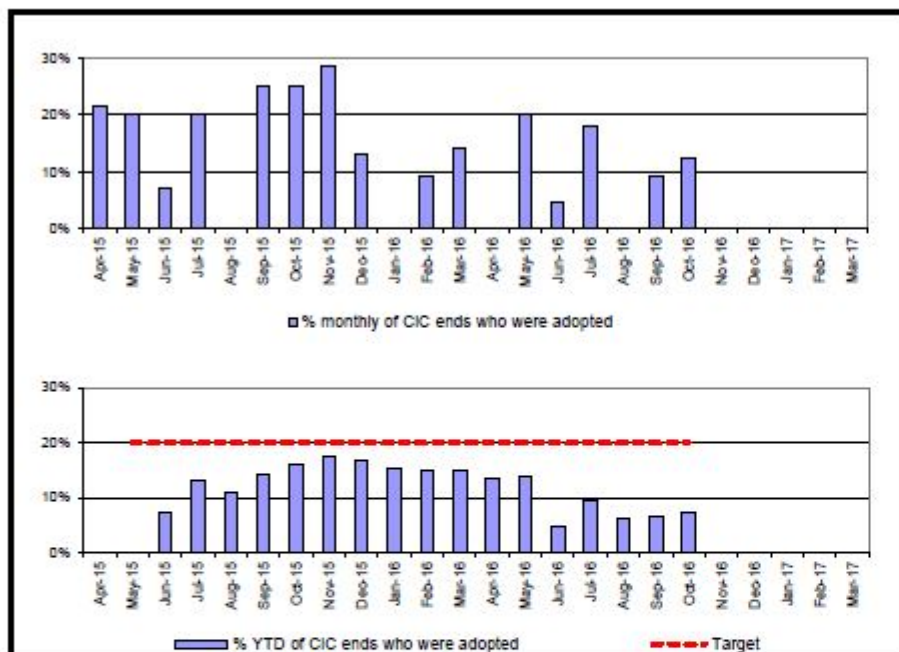
CSC Commentary
 Compliance rates continue to be high; recording can still be improved and this is being addressed with team managers .

Definition
 The denominator is the number of children in care who are of school age. The numerator is of those children, the number that have a PEP added to the system.

G = >95% **A=95%-90%** **R < 90%**

Chart 18

Percentage of children adopted October 201



Month	Adop.	CiC Ends	% monthly	% YTD	Target	Var	RAG
Apr-15	3	14	21.4%	0.0%	20.0%	-20.0	A
May-15	2	10	20.0%	0.0%	20.0%	-20.0	G
Jun-15	2	28	7.1%	7.1%	20.0%	-12.9	R
Jul-15	5	25	20.0%	13.2%	20.0%	-6.8	G
Aug-15	0	11	0.0%	10.9%	20.0%	-9.1	R
Sep-15	5	20	25.0%	14.3%	20.0%	-5.7	A
Oct-15	4	16	25.0%	18.0%	20.0%	-4.0	A
Nov-15	4	14	28.6%	17.5%	20.0%	-2.5	A
Dec-15	3	23	13.0%	16.8%	20.0%	-3.2	R
Jan-16	0	14	0.0%	15.2%	20.0%	-4.8	R
Feb-16	1	11	9.1%	14.8%	20.0%	-5.2	R
Mar-16	1	7	14.3%	14.8%	20.0%	-5.2	R
Apr-16	0	16	0.0%	13.5%	20.0%	-6.5	R
May-16	2	10	20.0%	13.8%	20.0%	-6.2	G
Jun-16	1	21	4.8%	4.8%	20.0%	-15.2	R
Jul-16	2	11	18.2%	9.4%	20.0%	-10.6	A
Aug-16	0	18	0.0%	8.0%	20.0%	-14.0	R
Sep-16	1	11	9.1%	6.6%	20.0%	-13.4	R
Oct-16	1	8	12.5%	7.2%	20.0%	-12.8	R
Nov-16					#####		
Dec-16					#####		
Jan-17					#####		
Feb-17					#####		
Mar-17					#####		

YTD:	7	95	--	7.4%	20.0%	-12.6	R
-------------	---	----	----	------	-------	-------	---

CSC Commentary
 The percentage of children who ceased to be in care as a result of an adoption order is within 1% of the performance last year. Given the national context of a growth in SGOs and a decline in adoption orders the RAG rating will need adjusting for this indicator. This is to be addressed.

Definition
 The number of children adopted as a percentage of the number of children who ceased to be in care



Year	PCC Result	SN Result	ENG Result
2013-14	18.0%	22.4%	17.0%
2014-15	19.0%	24.0%	17.0%
2015-16	17.0%	21.0%	15.0%